

- Understanding co-op infrastructure
- Summer projects progress
- Annual meeting June 10
- Operation Round Up deadline

# — HAPPY — Retirement

## BAIR RETIRES AS COOPERATIVE LEGAL COUNSEL

After 40 years of representing KEM Electric Cooperative, we bid a heartfelt farewell to our legal counsel, Tom Bair, who is retiring.

“Over the years, Tom has shared his legal expertise and guidance with our board of directors and has been an instrumental part in supporting our mission at the co-op,” says KEM Electric Board President Victor Wald.

Tom will be greatly missed, and we wish him the best of luck in the next chapter of life. On behalf of the KEM Electric membership, board of directors and staff, we thank Tom for his years of dedication to KEM Electric.



## MANAGER'S MESSAGE:

# Understanding your electric cooperative infrastructure



**Jason Bentz**

Co-General Manager/CEO

As a member of KEM Electric Cooperative, you are part of a cooperative that takes pride in delivering safe and reliable electricity to our communities. While you're familiar with the services we provide, you might not always know who owns and maintains the various components of the electric system that brings power to your home or business.

### KEM Electric's responsibility

As your electric cooperative, we own and maintain the distribution system that brings electricity to your home or business. This includes:

- **Substations:** These facilities reduce the voltage from the transmission lines, making it safe for local distribution.
- **Power lines:** These poles, wires and cables transport electricity from the substation to your property.
- **Transformers:** These essential devices step down high-voltage electricity from distribution lines to a usable voltage for homes and businesses.
- **Meters:** These devices measure the amount of electricity used by each member, ensuring accurate billing.

### What you, the member, own

While we own the majority of the infrastructure up to your property line, there are some areas where your ownership comes into play. Typically, this includes:

- **Service entrance:** This is the electrical wiring beyond where our system connects to your home or business, usually from the meter to your electrical panel or circuit breaker box. But sometimes the meter is not near or on the building, so from wherever the meter is located is the member's responsibility.
- **Electrical panel and wiring inside your home** Everything that happens within your home's walls, from the panel that distributes power throughout your home to the outlets and light fixtures, is your responsibility to maintain and upgrade.

Understanding who owns what is more than just a matter of curiosity. It's about ensuring the safety, efficiency and longevity of your electrical service. It also helps you know who to contact when something goes wrong, and it clarifies the roles and responsibilities between you and KEM Electric.

As always, our team is here to help. If you ever have questions about what's covered by your co-op membership or need clarification on how to care for your portion of the system, don't hesitate to reach out. ⚡



## JOIN US AT YOUR ANNUAL MEETING

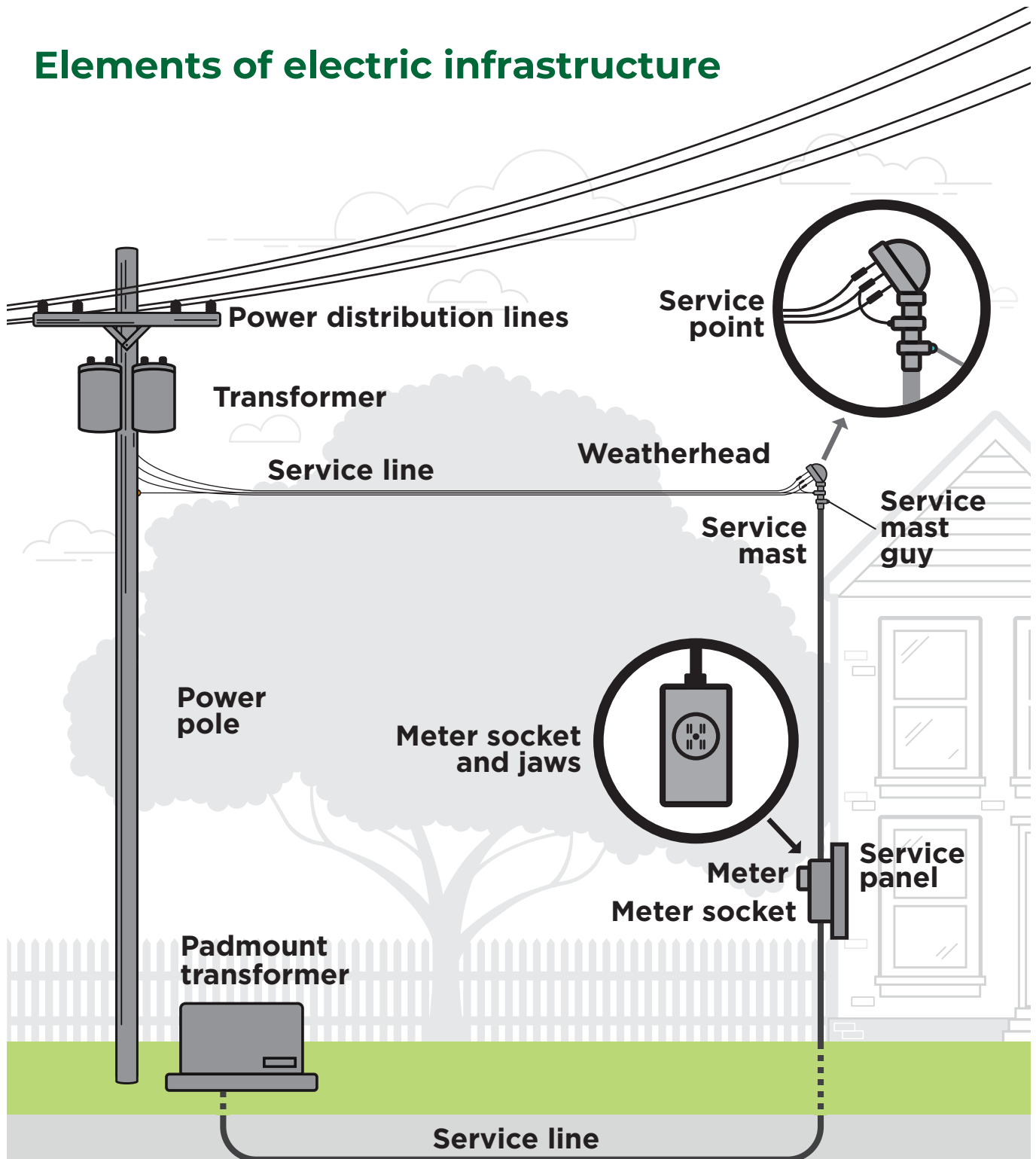
**JUNE 10, LINTON CIVIC CENTER,  
120 E CEDAR AVE, LINTON**

*Registration opens at 4 p.m. with refreshments (coffee and kuchen).  
The Business Meeting begins at 5 p.m. with a meal to follow.*





## Elements of electric infrastructure



*Note: This graphic depicts overhead and underground service.  
Please be aware of which type of service you receive at your home or business.*

*This graphic is for illustrative purposes only and may not reflect the exact setup between the co-op and a member's service installation.*

## MESSAGE FROM OPERATIONS:

# Summer projects progress



**Dale Nagel**

Chief of Staff/  
Line Superintendent

As we continue through summer, crews are hard at work on various projects throughout our service area. Some of these projects are to meet our members' needs, while others were diligently planned by our engineering and operations department.

One of our routine construction projects for which we allocate time each year is pole testing. This year, pole testing began in April.

We focus on different sections of our service area annually, with this year's focus on the Ashley and Zeeland area. Utility poles, such as any infrastructure exposed to extreme weather conditions, can begin to deteriorate over time, both externally and internally. Testing allows us to find poles that are an issue and replace them before they fail.

We have been actively upgrading technology across the service area. Trip savers, which are fault-detection technology, continue to be installed throughout our lines being fed from the Sunburst and Linton

substations. Supervisory control and data acquisition (SCADA) compatible technology will be installed in the Krassna and Sunburst substations. SCADA allows us to have real-time data at our fingertips, which will assist in more efficient system loading, switching and outage restoration.

Summer is a busy time for construction across our service territory, from installing underground cable, performing service upgrades to installing new services. One of the projects starting is south of the Tappen substation, where crews and contractors will be installing three-phase underground to replace the existing overhead infrastructure.

While our crews remain busy throughout the coming months, we know our members are hard at work as well. We'd like to take this time to remind members to be aware of power lines and electrical equipment. Whether you are baling and stacking hay, spraying fields or enjoying time in your yard, take a moment to look around and stay aware of your surroundings to help prevent accidents. At the end of the day, safety remains our priority for you, our members. ⚡





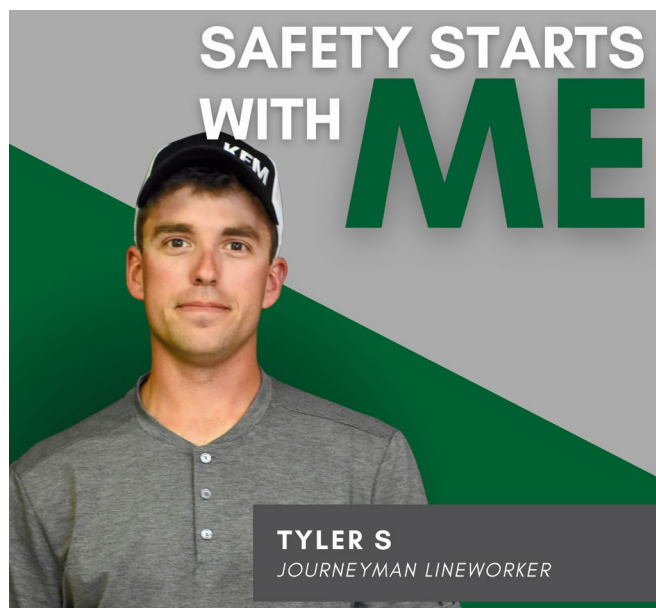
SAFETY STARTS WITH ME:

## Summer safety reminders

Summer brings many of our favorite activities, such as being outside and spending time with family and friends. As you find yourself spending more time outside enjoying the longer days, we want to remind you about a few safety tips to ensure everyone stays safe this summer.

"We want to remind members that our infrastructure, such as power lines and pad-mounted transformers, carry extremely high voltages. If contact is accidentally made, the results can be dangerous," says Tyler Schummer, a journeyman lineworker. "Here are a few tips to remember when you are spending time outside this summer."

- **Plan before you plant.** If you plan to plant trees or shrubs, keep them at least 10 feet away from electrical infrastructure, such as power poles, power lines and pad-mounted transformers (the big green boxes). This ensures line crews have enough room to safely work in and around our infrastructure if needed.
- **Always look up.** Before trimming trees, flying kites or working on a roof, be aware of overhead power lines. These activities can pose serious safety risks if contact is made with power lines, potentially causing power outages, injuries or even electrocution.
- **Stay away from substation fences.** Substations house high-voltage equipment that can be dangerous. Please do not loiter around or do not climb substation fences.



- **Stay clear of downed power lines.** Always assume downed lines are live. Stay at least 35 feet away and report them immediately to the cooperative.

Your safety is important to us. We hope you keep these safety tips in mind, so you and others can enjoy these summer days. Additionally, follow us on social media at KEM Electric to stay up to date on cooperative information, including weather threats and outages. ⚡



## Join us at Emmons County Ag Day

**Friday, June 13 in Linton**

We will be located in the Co-op Corner from 9:30 a.m. to 3:30 p.m.! Visit our booth for a chance to win prizes that will be sure to add some fun to your summer.

**Visit the Linton Chamber of Commerce Facebook page for additional details.**

## MESSAGE FROM MEMBER RELATIONS:

# KEM Electric concludes Student of the Month program



**Marcy Sanders**

*Manager of  
Member Relations*

Recently, KEM Electric Cooperative concluded its Student of the Month program, a yearlong initiative aimed at recognizing outstanding students across the cooperative's service area.

Throughout the school year, area schools and community members were invited to nominate students who they find to be outstanding in a variety of ways. Each month, one student was randomly selected to receive a monetary sponsorship, thanks to a partnership between KEM Electric and Touchstone Energy® Cooperatives. The students then utilized the sponsorship money to help benefit their school – whether through classroom resources, extracurricular programs or other student-focused initiatives.

“We’re proud to celebrate these outstanding students and to support their schools in a way that reflects our cooperative values,” says Marcy Sanders, manager of member relations.

Through the Touchstone Energy Student of the Month program, students were nominated by their teachers, coaches and other community members. This year, over 50 students were nominated for the program.

“It has been an impactful opportunity, getting to highlight these students and learn more about each of their interests, skills and how they are helping make their community and school a brighter place,”

Sanders says.

We recognize all the students who were chosen for this year’s Touchstone Energy Student of the Month:

- **Sara Pfeifle**, a junior at Ashley Public School, was recognized for being a hardworking student around the school.
- **Annabelle Huber**, a senior at Hazelton-Moffit-Braddock Public School, was recognized for being a hardworking student who is always willing to help in the school and around the community.
- **Leo Cadena**, a kindergartener at Kidder County Public School, was recognized for being kind, smart and bringing others joy as well as being a great friend to all.
- **Jace Wald**, a sixth-grader at Linton Public School, was recognized for going above and beyond around the classroom and school.
- **Bentley Wald**, a seventh-grader at Napoleon Public School, was recognized for being kind and helpful around the school, community and farm.
- **Brady Pool**, a junior at Strasburg Public School, was recognized for being kind, helpful and hardworking.
- **Carter Ketterling**, a sophomore at Wishek Public School, was recognized for always being willing to help others with enthusiasm and dedication.
- **Conrad Richards**, a sixth-grader at Zeeland Public School, was recognized for being respectful and a good friend to others.

Congratulations to all who were nominated. KEM Electric looks forward to further supporting youth through programs in the future. If you would like to learn more about youth programs through our cooperative, visit our website at [kemelectric.com](http://kemelectric.com) or call our office at 701-254-4666 and visit with Marcy. ⚡



## Our next Operation Round Up application deadline is approaching!

Applications are due June 30.

Visit [www.kemelectric.com](http://www.kemelectric.com) for more information.

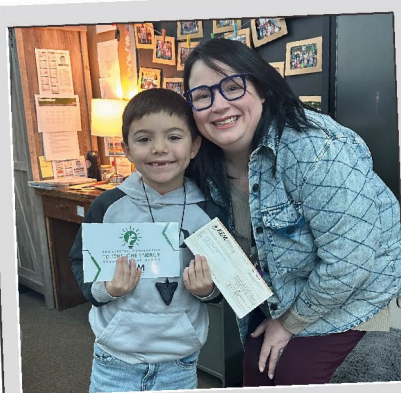




Sara Pfeifle



Annabelle Huber



Leo Cadena



Jace Wald



Bentley Wald



Brady Pool




Carter Ketterling



Conrad Richards



KEM ELECTRIC COOPERATIVE  
**TOUCHSTONE ENERGY**  
STUDENT OF THE MONTH

Your Touchstone Energy® Cooperative 



## KEM ELECTRIC BOARD MEETING HIGHLIGHTS: MARCH 25

The meeting of the board of directors of KEM Electric Cooperative was held on March 25 in Linton. The meeting was called to order at 9:38 a.m. by Chairman Victor Wald. A quorum was present. Also present were co-General Managers/CEOs Travis Kupper and Jason Bentz, Legal Counsel Tom Bair, Chief of Staff/Line Superintendent Dale Nagel, Member Relations Manager Marcy Sanders, Chief Financial Officer Alex Craigmile and Executive Assistant Connie Hill.

**Consent agenda:** The consent agenda was approved as presented.

**Strategic items:** Bentz and Kupper presented the co-general managers' report, which included updates on grant opportunities, Basin Electric Power Cooperative's District 9 meeting, Western Area Power Administration, North Dakota managers group and others. Several additional Basin Electric board documents were available for review.

**Department reports:** Craigmile provided the financial report. Nagel provided a department report, which included safety training, a substation upgrade and new technology installation. Sanders provided a department report, which included annual meeting information, youth programs and grant funding opportunities for members.

**Action items:** Action items were discussed and resolved.

**Discussion/general information:** The board discussed policy updates as well as other items.

**Executive session:** The board entered an executive session.

The meeting concluded with the adjournment. Secretary-Treasurer Carter Vander Wal certified the accuracy of the minutes.

**Next meeting date:** The next meeting is at 9:30 a.m. July 29 in Linton. If you wish to be placed on the agenda, please call the office. ⚡



## Discounts offered for Medora vacation

KEM Electric Cooperative is able to offer its members a discount by being a Touchstone Energy® member. Simply call 1-800-MEDORA-1 and give the discount code of "TOUCH2025" for a 15% discount on all of the following during any night of the season.

- Medora Musical
- Pitchfork steak fondue
- Bully Pulpit Golf Course
- Gospel Bruch tickets
- Old Town Hall Theater shows

### LODGING AT ANY OF THE FOLLOWING:

- Elkhorn Quarters
- Badlands Motel
- Rough Riders Hotel

*The code is good for reservations over the phone, online or in person. A green fees discount will be applied at check-in for a tee time at the golf course.*

## KEM ELECTRIC COOPERATIVE INC.

### DIRECTORS:

Victor Wald, Chairman ..... Napoleon  
Carmen Essig, Vice Chairman ..... Lehr  
Carter Vander Wal, Sec.-Treas. .... Pollock  
Dean Dewald, Director ..... Dawson  
John R. Beck, Director ..... Linton  
Neil Meidinger, Director ..... Zeeland  
Vacancy, Director-at-large

Your Touchstone Energy® Cooperative 

### MANAGEMENT:

Travis Kupper ..... Co-GM/CEO  
Jason Bentz ..... Co-GM/CEO

### Report outages to the following toll-free number: 800-472-2673

Hazleton, Linton and Strasburg exchanges' phone number: 701-254-4666

### OFFICE HOURS:

Monday through Friday,  
8 a.m. to 4:30 p.m.  
Website: kemelectric.com  
Email address: info@kemelectric.com

FIND US ON:

