



Giving Hearts Day

**Giving to those
who give back to the community**

FEBRUARY 2022

IN THIS ISSUE

- Giving Hearts Day: Giving to those who give back to the community
- Manager's message: Let's connect
- Annual poster contest announced
- Interested in becoming a director?
- Co-op offers variety of scholarships
- Board highlights



GIVING HEARTS DAY: **Giving to those who give back to the community**

BY ANNE HANSEN

Each year, North Dakotans reach into their pockets and pledge contributions during a 24-hour event known as Giving Hearts Day.

Giving Hearts Day arose in 2008 with the hope that around Valentine's Day, individuals would not only show affection to the people they love, but to the charities they love, too! Fast-forward to today, and the annual event has become the longest-running day of giving in the country. Giving Hearts Day has helped raise more than \$110 million for more than 550 local nonprofit organizations.

"Giving Hearts Day provides people all across the region an opportunity to experience the joy of giving by supporting their local nonprofits," said Jessica Offerman, operational excellence leader for Giving Hearts Day.

The organization itself is a platform for charities to fund their missions through a community of donors. To enrich local North Dakota communities, the Giving Hearts Day organization wanted to see all donations stay local.

"All dollars raised on Giving Hearts Day stay with charities in North Dakota and northwestern Minnesota to fund their important missions that improve health and quality of life right here in our communities," Offerman said.

Additionally, the organization reviews all applicants to ensure that each is a valid nonprofit and prepared to run a successful Giving Hearts Day campaign by attending High Impact Institute fundraising trainings.

Spotlight on Elks Camp Grassick

Elks Camp Grassick, located near Dawson, is a summer camp for children and adults with physical and intellectual disabilities, supported by the North Dakota Elks.

Each summer, Camp Grassick serves close to 200 children and adults with special needs through six different camping sessions. Elks Camp Grassick provides therapies, such as reading intervention and speech, language and occupational therapy, along with recreation, crafts and waterfront activities.

"Our mission is to provide a summer camp experience where children and adults can learn, grow and build friendships, while fostering independence in a supportive and accepting environment," said Jenny Hunt, executive director at Elks Camp Grassick.

"Elks Camp Grassick is extremely grateful for the support of generous people who make it possible for us to serve our special campers," Hunt said. The



Campers of all abilities enjoy the hayride.



During a speech class, campers made Play-Doh and puffy paint while working on following step-by-step directions.

camp is completely funded by the North Dakota Elks and donations.

“Although we charge a small fee for camps, there are some families who are unable to afford it,” Hunt said. “We never turn down a camper due to financial reasons, so we rely on donations to help us meet our operational needs.”

When people donate during Giving Hearts Day, they directly impact the lives of the people Elks Camp Grassick serves by helping them gain independence, grow socially and academically, build confidence and enjoy a summer camp experience.

In addition to general camp costs, Camp Grassick is in the middle of a new capital project that will help with a new bathroom and storm shelter facility.

“The bathroom portion of this project will allow us to better serve our campers with the highest needs by providing larger shower stalls to accommodate wheelchairs and shower chairs. This is a necessity to make showering safer and more accessible for our campers,” Hunt said.

How you can make a difference

Although the event takes place on Thursday, Feb. 10, this year, the Giving Hearts Day efforts and funds raised help beyond the day of the event.

If you are interested in donating, you can visit www.givingheartsday.org and click on the donate button. Another way to contribute is to send a check, directly made to the charity of your choice, to the organization by Feb. 10.

“With nearly 500 charities participating, there is an



Campers enjoy an adaptive art project.

abundance of ways to help. We have the resources for you to maximize your efforts with the charity or charities your heart chooses,” Offerman said. ■

MANAGER'S MESSAGE:

Let's connect



Travis Kupper

When we say we live in a “connected” world, most of us think about technology, like our smartphones and other devices and gadgets. But when you’re a member of an electric co-op (that’s you), there’s so much more to being part of our connected co-op community.

As a member of KEM Electric Cooperative, you help to power good in our local community through Operation Round Up,

sponsorships and other initiatives that help the most vulnerable in our community.

We depend on you, because you power our success. And when KEM Electric Cooperative does well, the community thrives, because we’re all connected.

We greatly value our connection to you, the members we serve. And we’d like to help you maximize the value you can get from KEM Electric Cooperative through a variety of programs, products and services we offer our members. For example, when you download our SmartHub app, you can monitor and manage your home energy use, pay your bill online and access a menu of additional options for potential savings and more.

When you follow KEM Electric Cooperative on social media, you can stay up to date on power restoration efforts, tree trimming planning, co-op director elections, giveaways and more. You’ll also see photos of our line crews in action and our employees helping with community service projects – and who doesn’t enjoy seeing good things happening in our community!

When you sign up for text alerts, you can receive advance notices on outage and restoration information, billing updates and changes to KEM Electric Cooperative event details.

By connecting with us, you can get real-time updates from your co-op. That’s why we want to make sure we have your most current contact information on hand. If we can’t connect with you on these platforms or in person, you could miss out on potential savings or important information.

KEM Electric Cooperative relies on data for nearly every aspect of our operations, and up-to-date contact information from our members helps ensure we can provide the highest level of service you expect and deserve. In addition to the contact information, KEM Electric Cooperative also surveys our members to better understand how we can serve you. Please be aware you might be receiving a phone call, or email, asking for you to participate in this survey in the coming months.

KEM Electric Cooperative exists to serve our members, and when we’re better connected to you and our local community, we’re better prepared to answer the call.

To update your contact information or to learn more about co-op products and services that can help you save, visit www.kemelectric.com, call 701-254-4666 or stop by our office in Linton.

We look forward to connecting with you!

Help us help you

As a member of KEM Electric Cooperative, we value your opinion and would like to hear how we can better serve you!

This year, KEM Electric Cooperative will be completing a member satisfaction survey. Participate by visiting: www.surveymonkey.com/r/2022KEMElectric. Share your feedback with us in this quick, 10-minute survey and help us continue to make KEM Electric Cooperative even better!

In addition, you might receive a random telephone survey performed by Odney Advertising. If you receive a call from Odney Advertising on behalf of KEM Electric Cooperative, please take time to answer the questionnaire. Thank you in advance!





KEM Electric announces annual poster contest

Grab your art supplies and draw a poster showing how KEM Electric Cooperative has provided power for generations!

This poster should display a clear, creative picture to help celebrate the cooperative's annual meeting theme in 2022: *Power for Generations*. All posters should display the Touchstone Energy® Cooperative logo on their entries. No matter what you draw, have fun! We can't wait to hear from you. Cash prizes will be awarded in each division.

Divisions:

- Preschool to kindergarten
- First grade to third grade
- Fourth grade to sixth grade

Deadline: Posters must be received at the KEM Electric office no later than 4:30 p.m. Monday, Feb. 28.

Rules:

- Posters must be on white, 8.5x11-inch paper.
- Posters must depict the theme, *Power for Generations*.
- Print the child's name, address, age and parents' names on the back of the posters.
- Submit a picture of the child with his or her artwork.
- Only dependents of current KEM Electric Cooperative members are eligible.

Prizes:

Each division will be awarded three prizes (nine prizes total):

- \$15, first place
- \$10, second place
- \$5, third place

Winners:

Winning posters will be featured in the KEM Electric Cooperative local pages of *North Dakota Living*.

Safety at KEM Electric Cooperative



KEM Electric Cooperative is an advocate of working safely. In fact, it is our way of life; the culture of your cooperative. We look out for the safety of ourselves and others – before, during and after work. Did you know members also play a key role in keeping our system safe? At times, you are our eyes in the sky and on the ground.

Should you see a power line issue that may need KEM Electric Cooperative's attention, please call the office or send us an email at safety@kemelectric.com with your concern. This correspondence should include the description of the location, your name and complete contact information, and a photo if possible. Working together helps ensure the safety of all! ■

Interested in becoming a director?

KEM Electric Cooperative's 2022 annual meeting will be held on Thursday, June 16. This year, the director seats up for election are those of Dean Hummel, director at-large, and Neil Meidinger, District 3.

KEM Electric is governed by a seven-member board of directors that is elected by you – the members and owners of the electric cooperative.

The cooperative is divided into five districts, with one director representing each district and two at-large board seats. The current board of directors includes District 1, John Beck; District 2, Carter Vander Wal; District 3, Neil Meidinger; District 4, Victor (Chuck) Wald; District 5, Dean Hummel, at-large director; and Carmen Essig, at-large director.

If you are interested in becoming a director for KEM Electric, please see the following section of bylaws pertaining to filling a petition for a director's seat:

404. Member Petition-Form.

(a) Each petition shall contain the following:

1. The name of the member nominee.
2. The director position for which the member nominee shall run.
3. The printed names, addresses and telephone numbers, date of signature, and original signatures of each member signing the petition.
4. At least 10 signatures of the members of the

respective district, or members at large, as the case may be.

(b) In the case of joint members, the signature of one or more than one joint member shall constitute one joint member.

(c) Firms, associations, corporations or body politics shall have the right to place one signature on a petition, the same as other members, by the signature of a duly appointed representative.

(d) Petitions may not be circulated or signed more than 90 days before the date when petitions must be filed pursuant to this bylaw. Any signatures to a nominating petition obtained more than 90 days before that date may not be counted.

(e) All petitions must be filed at the principal offices of the cooperative not less than 45 days prior to the date of the meeting of the members, as fixed by the board of directors.

(f) After verifying that a petition complies with this bylaw, the secretary of the board of directors shall post a list of nominations for directors at the principal office of the cooperative at least 30 days before the meeting of the members.

If you would like to place your name on the ballot, pick up a petition at the KEM Electric office. Petitions become available on Feb. 1. Petitions must be returned to the cooperative office no later than May 2. ■

KEM Electric continues to offer a variety of scholarships

KEM Electric Cooperative takes pride in assisting with the development of rural leadership through our scholarship program. We feel it's important to help finance our local students' educational journeys by offering scholarships to qualifying seniors.

We are happy to continue our updated program to include more scholarship opportunities to our graduating seniors. The applicants must be U.S. citizens and dependents of KEM Electric Cooperative members. All scholarships will be awarded during the 2021-22 school year.

\$500 scholarships available through area high schools

KEM Electric Cooperative will award eight \$500 scholarships to qualified applicants whose parent(s) or guardian(s) are members of the co-op. School representatives from Ashley, Wishek, Zeeland, Strasburg, Linton, HMB, Kidder County and Napoleon will select one graduating senior to receive the funds.

Interested in applying? Students should contact their school counselor for information. The schools will then forward each recipient's name to KEM Electric. Applications are available at area schools, at the Linton office or on KEM Electric's website. The deadline to apply is Feb. 11.

The co-op will also award one \$500 scholarship to a graduating senior from a homeschool setting, GED setting or a school outside of our service area. Please contact KEM Electric if interested.

\$1,000 scholarship sponsored by Basin Electric Power Cooperative

KEM Electric will award a \$1,000 scholarship to a student who is already enrolled or planning to enroll in a full-time graduate or undergraduate program. The student must attend an accredited two-year or four-year college, university or vocational/technical school. All post-secondary students whose parent(s)/guardian(s) are members of KEM Electric are eligible to apply.

Luck-of-the-draw scholarships

KEM Electric will award two \$500 luck-of-the-draw scholarships to be drawn at our annual meeting. All high school seniors who are dependents of KEM Electric members and have not previously been chosen for a co-op scholarship are eligible. Students must attend our annual meeting and be accompanied with at least one parent or guardian, and will be required to RSVP before the meeting. ■

Download the applications at www.kemelectric.com.

You may also call 701-254-4666 or 800-472-2673 to request an application.

Complete the online application or mail paper applications to:

**KEM Electric Cooperative
Attn: Marcy Sanders
107 S. Broadway
P.O. Box 790
Linton ND 58552**

Return completed applications before Feb. 11.





BOARD MEETING HIGHLIGHTS

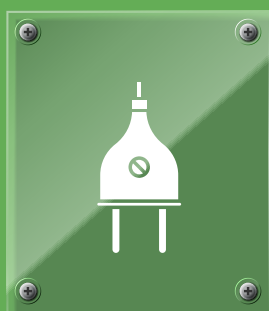
Dec. 14, 2021

- Approved Nov. 16, 2021, board meeting minutes.
- Approved and accepted the 2022 budget.
- Heard co-general manager/CEO reports.
- Heard Basin Electric Power Cooperative update.
- Discussed Energy Transfer Partner update.
- Named Victor Wald as Innovative Energy Alliance voting delegate.
- Approved Travis Kupper as National Rural

- Telecommunications Cooperative voting delegate.
- Approved Western Area Power Administration contract.
- Heard revenue financial report.
- Heard board meeting reports.
- Approved the Rural Development Finance Corporation grant donations.
- Held executive session.

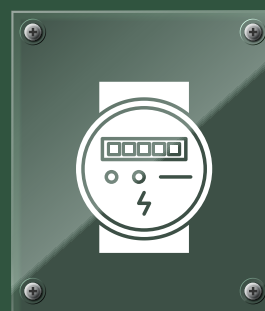
THE DIFFERENCE BETWEEN

KILOWATT



Power required for the
appliance to work

KILOWATT-HOUR



Energy used each hour
the appliance is on

HOW MUCH ELECTRICITY DOES AN AMERICAN HOME USE?

In 2020, the average annual
electricity consumption for a U.S. residential
utility customer was

10,715 kWh

or an average of about

893 kWh
per month.

WHAT CAN I DO WITH 1 KWH? *(based on U.S. average electric rates)*

89 slices of
bread toasted

12 pots of
coffee brewed

276 charges for
your cellphone

18 hours of
refrigerator use

3 loads
in the washer

20 hours
on your laptop

KEM ELECTRIC COOPERATIVE INC.

DIRECTORS:

Victor Wald, Chairman Napoleon
John Beck, Vice Chairman Linton
Carter Vander Wal, Sec.-Treas. Pollock
Dean Dewald, Director Dawson
Carmen Essig, Director Lehr
Dean Hummel, Director Hague
Neil Meidinger, Director Zeeland

Your Touchstone Energy® Cooperative 

MANAGEMENT:

Don Franklund Co-GM/CEO
Travis Kupper Co-GM/CEO

Report outages to the following toll-free number:
800-472-2673

Hazleton, Linton and Strasburg exchanges' phone
number: 701-254-4666

FIND US ON:

OFFICE HOURS:

Monday through Friday,
8 a.m. to 4:30 p.m.

Website: kemelectric.com / Email address: info@kemelectric.com

